



TIEG-1/2 Polyclonal Antibody

Catalog No	YP-Ab-02114
Isotype	IgG
Reactivity	Human;Mouse;Rat
Applications	IHC;IF;ELISA
Gene Name	KLF10/11
Protein Name	Krueppel-like factor 10/11
Immunogen	The antiserum was produced against synthesized peptide derived from human KLF10/11. AA range:391-440
Specificity	TIEG-1/2 Polyclonal Antibody detects endogenous levels of TIEG-1/2 protein.
Formulation	Liquid in PBS containing 50% glycerol, 0.5% BSA and 0.02% sodium azide.
Source	Polyclonal, Rabbit,IgG
Purification	The antibody was affinity-purified from rabbit antiserum by affinity-chromatography using epitope-specific immunogen.
Dilution	IHC: 1/100 - 1/300. ELISA: 1/5000.. IF 1:50-200
Concentration	1 mg/ml
Purity	≥90%
Storage Stability	-20°C/1 year
Synonyms	KLF10; TIEG; TIEG1; Krueppel-like factor 10; EGR-alpha; Transforming growth factor-beta-inducible early growth response protein 1; TGFB-inducible early growth response protein 1; TIEG-1; KLF11; FKLF; TIEG2; Krueppel-like factor 11; Transfor
Observed Band	
Cell Pathway	Nucleus .
Tissue Specificity	Epithelium, Eye, Placenta,
Function	function:Transcriptional repressor involved in the regulation of cell growth. Inhibits cell growth. Binds to the consensus sequence 5'-GGTGTG-3'.,induction:By TGF-beta.,PTM:Ubiquitinated; mediated by SIAH1 and leading to its subsequent proteasomal degradation.,similarity:Belongs to the Sp1 C2H2-type zinc-finger protein family.,similarity:Contains 3 C2H2-type zinc fingers.,
Background	This gene encodes a member of a family of proteins that feature C2H2-type zinc finger domains. The encoded protein is a transcriptional repressor that acts as an effector of transforming growth factor beta signaling. Activity of this protein may inhibit the growth of cancers, particularly pancreatic cancer. Alternative splicing results in multiple transcript variants. [provided by RefSeq, Jun 2013],

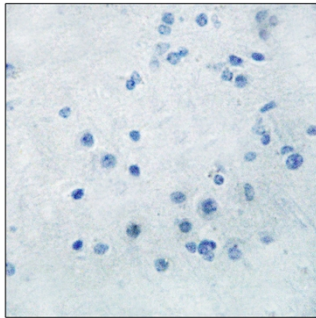
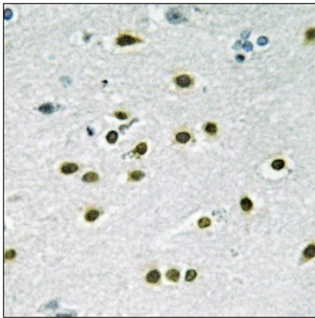
matters needing attention

Avoid repeated freezing and thawing!

Usage suggestions

This product can be used in immunological reaction related experiments. For more information, please consult technical personnel.

Products Images



Immunohistochemistry analysis of paraffin-embedded human brain tissue, using KLF10/11 Antibody. The picture on the right is blocked with the synthesized peptide.